

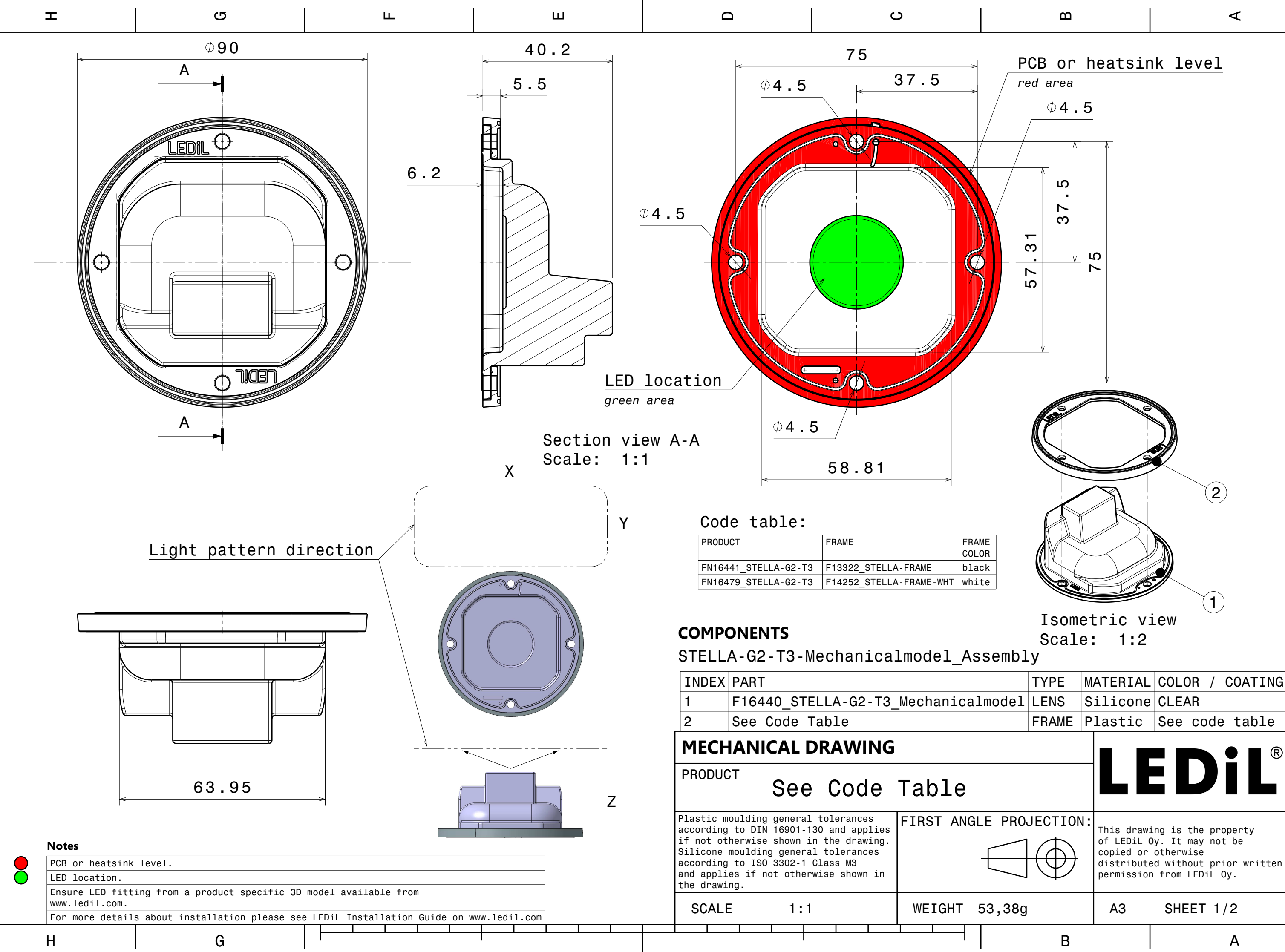
DETAILS

| | |
|-----------------|----------------------|
| Product Number | FN16479_STELLA-G2-T3 |
| Family | Stella |
| Type | Assembly |
| Color | white |
| Diameter | 90 mm |
| Height | 40,20 mm |
| Style | round |
| Optic Material | Silicone |
| Holder Material | |
| Fastening | socket |
| Status | production ready |
| ROHS Compliant | Yes |
| Date Updated | 15/02/2018 |



OPTICAL PROPERTIES

| LED | Viewing | Light | Efficiency | cd/lm | Connector |
|---------------|----------------|---------------|------------|-------|------------------|
| | Angle | Beam | | | |
| V22 Gen7 | Asymmetric deg | Streetligh... | 91 % | 0.400 | BJB: 47.319.2030 |
| CLL04x/CLU04x | sim: Asymmetri | Streetligh... | 89 % | 0.360 | - |



Notes

| | |
|---|---|
| ● | PCB or heatsink level. |
| ● | LED location. |
| | Ensure LED fitting from a product specific 3D model available from www.ledil.com . |
| | For more details about installation please see LEDiL Installation Guide on www.ledil.com |

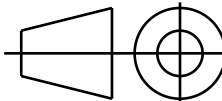
Code table:

| PRODUCT | FRAME | FRAME COLOR |
|----------------------|-------------------------|-------------|
| FN16441_STELLA-G2-T3 | F13322_STELLA-FRAME | black |
| FN16479_STELLA-G2-T3 | F14252_STELLA-FRAME-WHT | white |

COMPONENTS

STELLA-G2-T3-Mechanicalmodel_Assembly

| INDEX | PART | TYPE | MATERIAL | COLOR / COATING |
|-------|-------------------------------------|-------|----------|-----------------|
| 1 | F16440_STELLA-G2-T3_Mechanicalmodel | LENS | Silicone | CLEAR |
| 2 | See Code Table | FRAME | Plastic | See code table |

| | | |
|---|--|---|
| MECHANICAL DRAWING | | LEDiL [®] |
| PRODUCT See Code Table | | |
| Plastic moulding general tolerances according to DIN 16901-130 and applies if not otherwise shown in the drawing. Silicone moulding general tolerances according to ISO 3302-1 Class M3 and applies if not otherwise shown in the drawing. | FIRST ANGLE PROJECTION:  | This drawing is the property of LEDiL Oy. It may not be copied or otherwise distributed without prior written permission from LEDiL Oy. |
| SCALE 1 : 1 | WEIGHT 53,38g | A3 SHEET 1 / 2 |

4

3

2

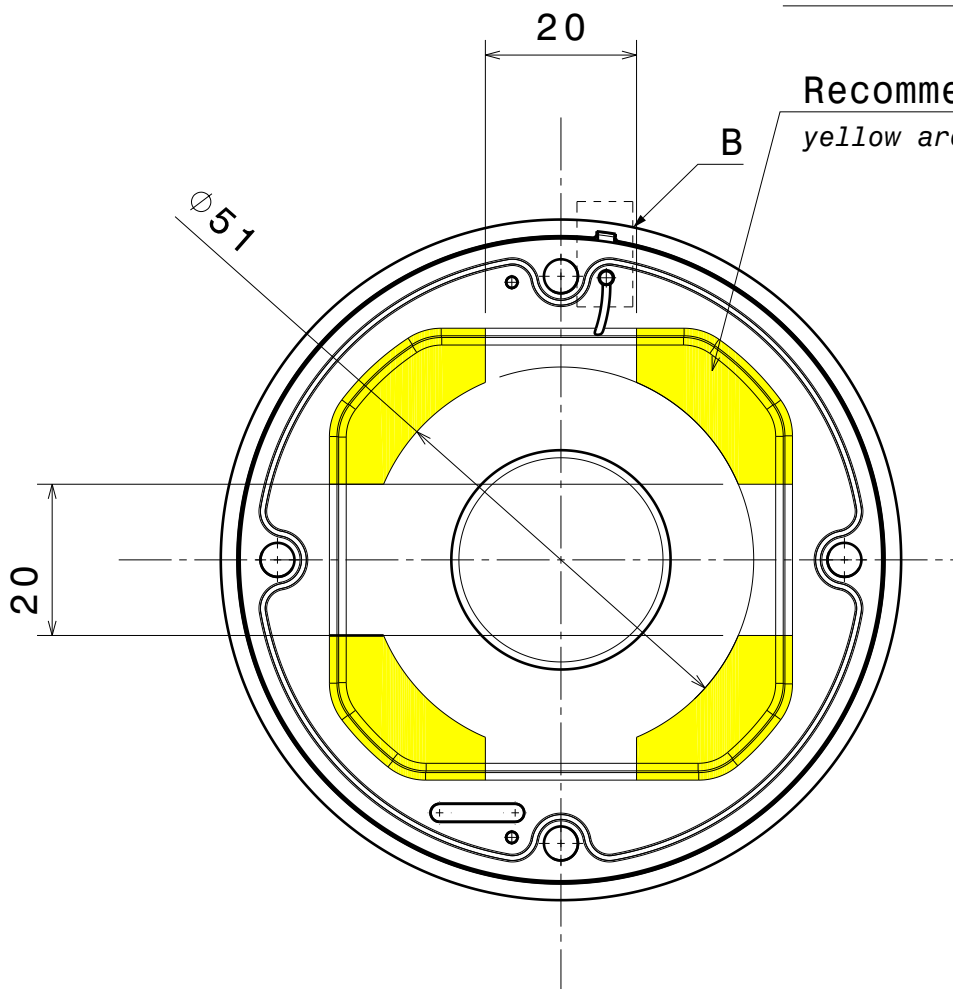
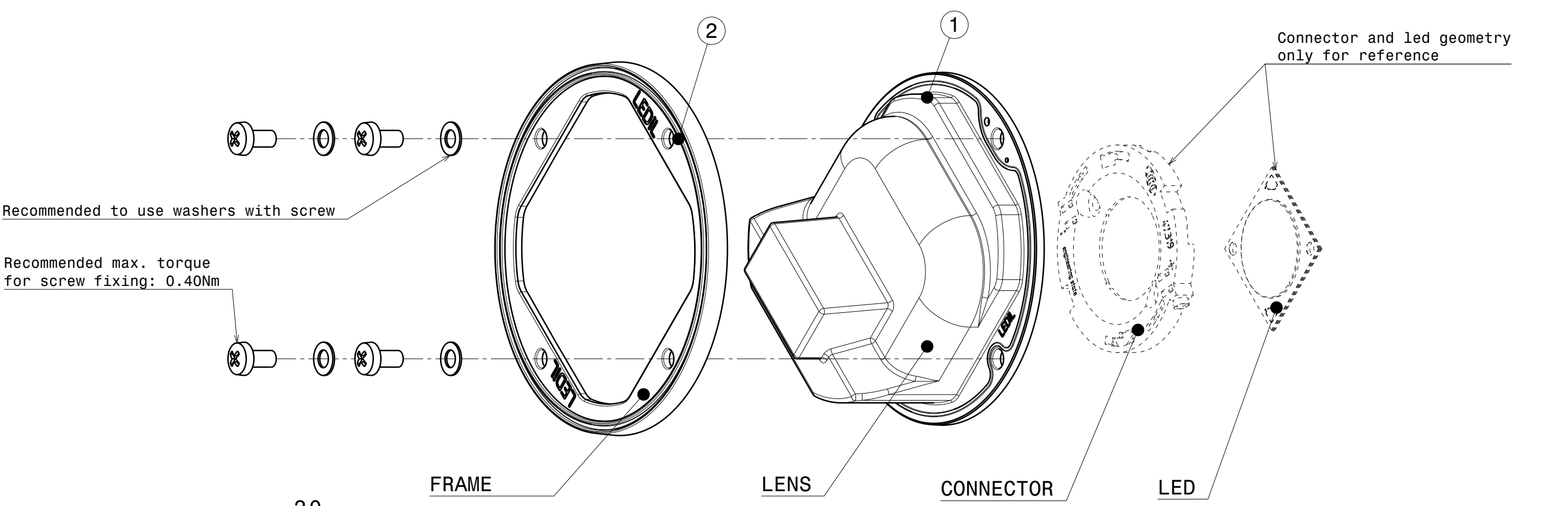
1

4

3

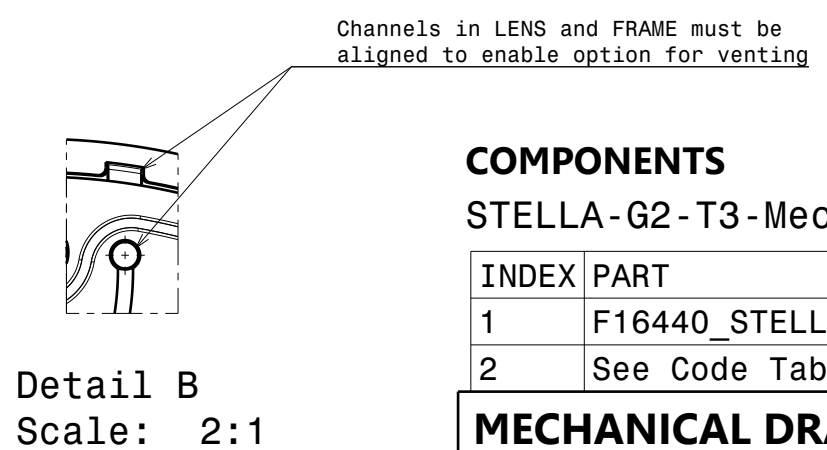
2

1



Recommended inlet area for wiring
yellow areas

Check suitability and design requirements with each connector



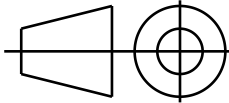
Code Table:

| PRODUCT | FRAME | COLOR |
|----------------------|-------------------------|-------|
| FN16441_STELLA-G2-T3 | F13322_STELLA-FRAME | black |
| FN16479_STELLA-G2-T3 | F14252_STELLA-FRAME-WHT | white |

COMPONENTS

STELLA-G2-T3-Mechanicalmodel_Assembly

| INDEX | PART | TYPE | MATERIAL | COLOR / COATING |
|-------|-------------------------------------|-------|----------|-----------------|
| 1 | F16440_STELLA-G2-T3_Mechanicalmodel | LENS | Silicone | CLEAR |
| 2 | See Code Table | FRAME | Plastic | See code table |

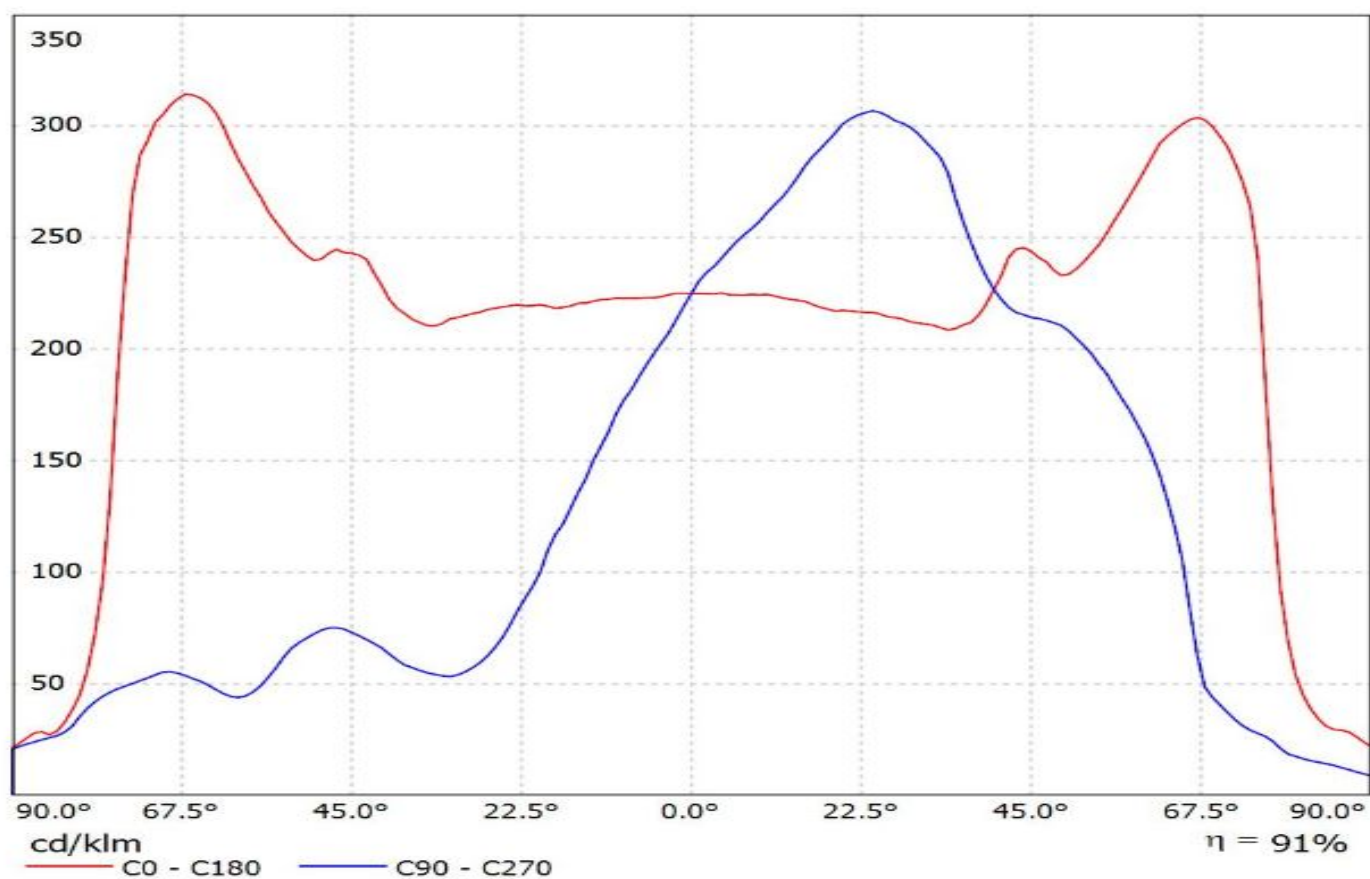
| | | |
|---|--|---|
| MECHANICAL DRAWING | | LEDiL® |
| PRODUCT See Code Table | | |
| Plastic moulding general tolerances according to DIN 16901-130 and applies if not otherwise shown in the drawing. Silicone moulding general tolerances according to ISO 3302-1 Class M3 and applies if not otherwise shown in the drawing. | FIRST ANGLE PROJECTION:  | This drawing is the property of LEDiL Oy. It may not be copied or otherwise distributed without prior written permission from LEDiL Oy. |
| SCALE 1:1 | WEIGHT 53,38g | |
| | | A3 SHEET 2/2 |

Notes

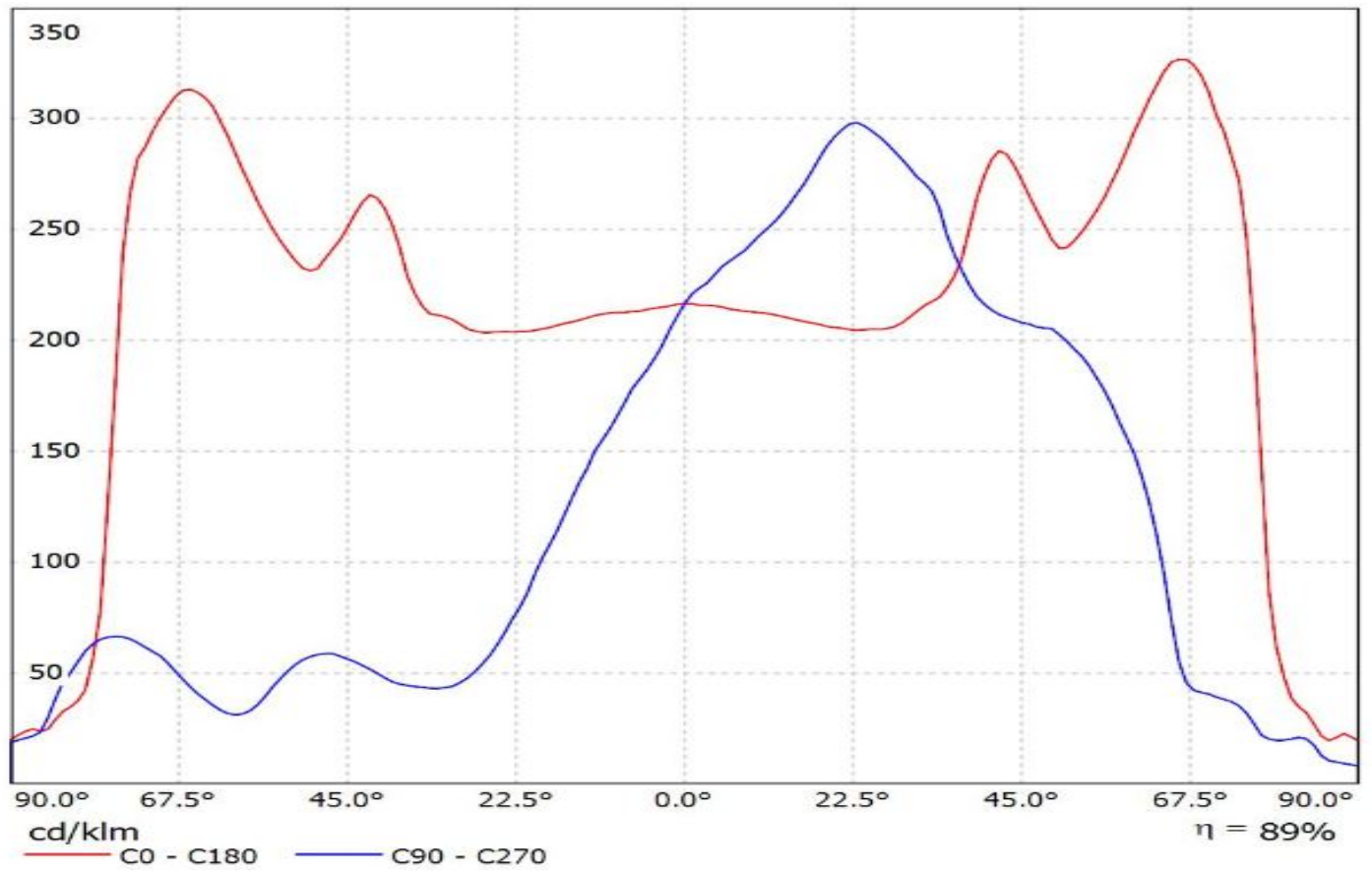
Ensure LED fitting from a product specific 3D model available from www.ledil.com.

For more details about installation please see LEDiL Installation Guide on www.ledil.com

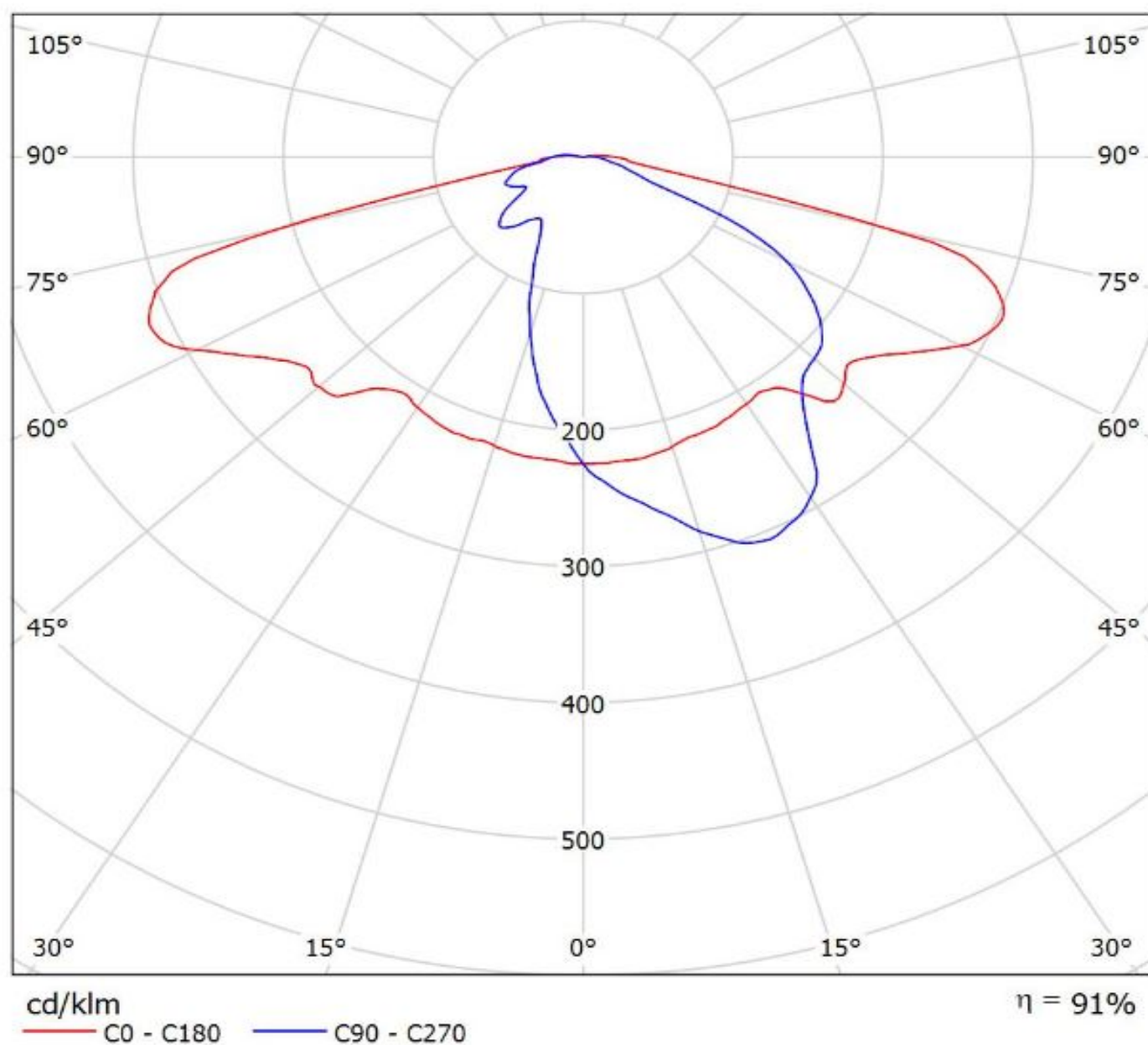
Luminaire: Ledil FN16479_STELLA-G2-T3_(V22_Gen7)_+BJB
Lamps: 1 x Bridgelux_V22_Gen7_(BXRE-30E6500-B)
+BJB47.319.2030_2016.03lm@250mA_P=11.9147W_U=47.678V



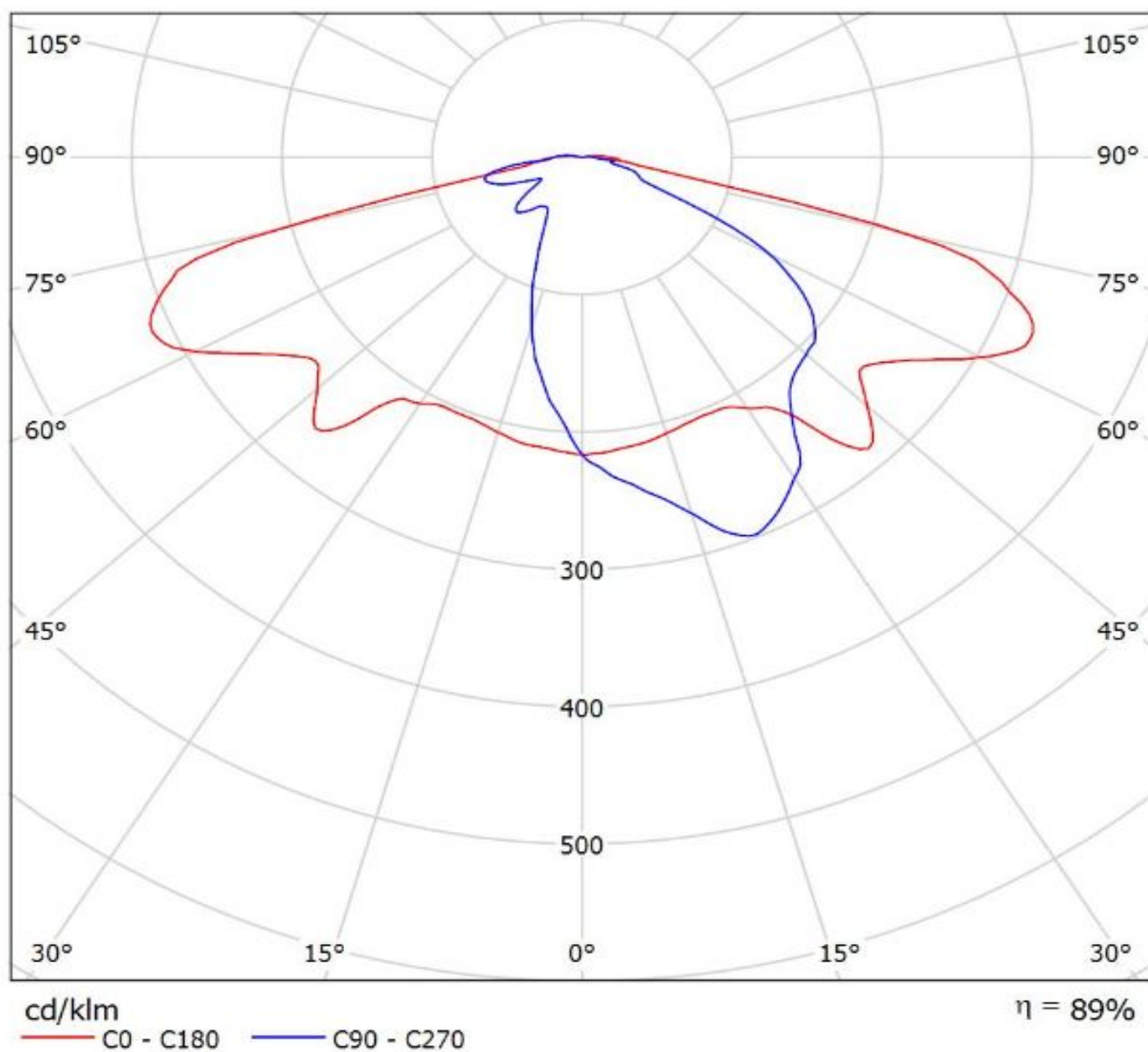
Luminaire: LEDiL Oy FN16479_STELLA-G2-T3_(CLU048)
Lamps: 1 x Citizen_CLU048_(1818C4-403H5K2)
_1800.23lm@250mA_CCT=4000K_P=11.9062W_U=47.658V



Luminaire: Ledil FN16479_STELLA-G2-T3_(V22_Gen7)_+BJB
Lamps: 1 x Bridgelux_V22_Gen7_(BXRE-30E6500-B)
+BJB47.319.2030_2016.03lm@250mA_P=11.9147W_U=47.678V



Luminaire: LEDiL Oy FN16479_STELLA-G2-T3_(CLU048)
Lamps: 1 x Citizen_CLU048_(1818C4-403H5K2)
_1800.23lm@250mA_CCT=4000K_P=11.9062W_U=47.658V



NOTE: The typical divergence will be changed by different color, chip size and chip position tolerance. The typical total divergence is the full angle measured where the luminous intensity is half of the peak value.

GENERAL INFORMATION

- Product series especially designed & optimized for series of LEDs.
- Special care taken to make light distribution as uniform as possible.

Note! Due to use of high power COB's with this product, special attention to proper thermal design is highly recommended. LEDiL has no liability for direct, indirect or consecutive damages arising from the LEDiL products being used outside of the recommended temperature range.