

# High-Brightness White LED: NC1003PWN1-10Q-05

SPECS NO:

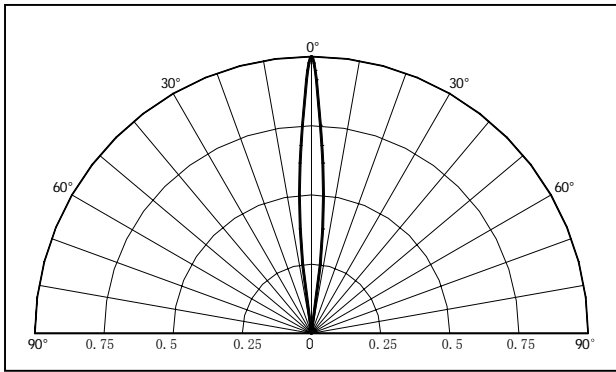
## ■ Characteristics

- High-Brightness LED
- Lens Color : Water Clear
- Half Value Angle( $2\theta_{1/2}$ ) :  $10^\circ$
- Superior Weather-resistance
- UV Resistant Epoxy

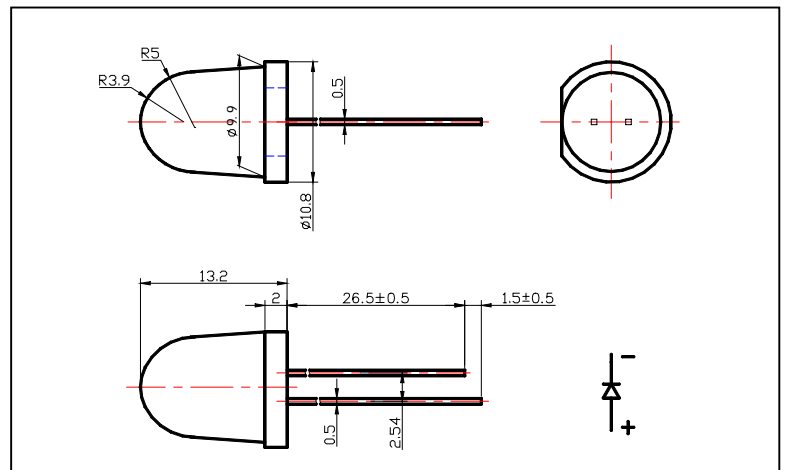
## ■ Application

- Advertisement
- Indicators
- Back Lights
- Illumination

## ■ Directivity



## ■ Outline Dimension



## ■ Electrical Optical Characteristics

Item	Symbol	Min.	Typ.	Max.	Unit	Condition
Luminous Intensity	Iv	60000	---	80000	mcd	IF=20mA
Viewing Angle	$2\theta_{1/2}$	---	10	---	Deg	
Chromaticity coordinates	X	---	0.32	---	---	
	Y	---	0.33	---	---	
Forward Voltage	VF	3.0	---	3.6	V	VR=5V
Reverse Current	IR	---	---	10	$\mu$ A	

※ Please Refer to CIE 1931 chromaticity diagram

# High-Brightness White LED: NC1003PWN1-10Q-05

SPECS NO:

## Absolute Maximum Rating

Item	Symbol	Maxabsolute	Unit
Power Dissipation	PD	100	mW
Peak forward current(1/10 duty cycle, 0.1ms pulse width)	IFP	50	mA
Continuous forward current	IF	20	mA
Derating linear from 50°C		0.4	mA/°C
Reverse voltage	VR	5	V
Operating temperature range	Topr	-40°C to +80°C	
Storage temperature range	Tstg	-40°C to +100°C	
soldering temperature	Tsod	260°C for 5 Seconds	

Pulse width Max 10ms Duty ratio Max 1/10

## Optical Electrical Characteristics

