
Specification For 5050 SMD 3-LED Module

(Waterproof)

Part Number	Color
25NEO-F12T73R3-E	☐ Red
25NEO-F12T73Y3-E	☐ Yellow
25NEO-F12T73B3-E	☐ Blue
25NEO-F12T73G3-E	☐ Green
25NEO-F12T73W3-E	☐ Pure White
25NEO-F12T73CW3-E	☐ Cool White
25NEO-F12T73WW3-E	☐ Warm White



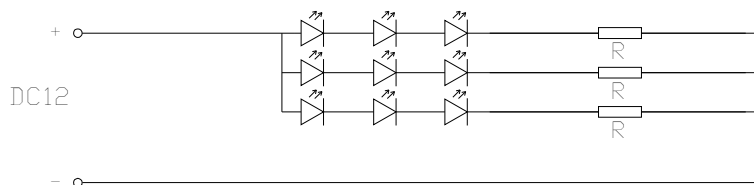
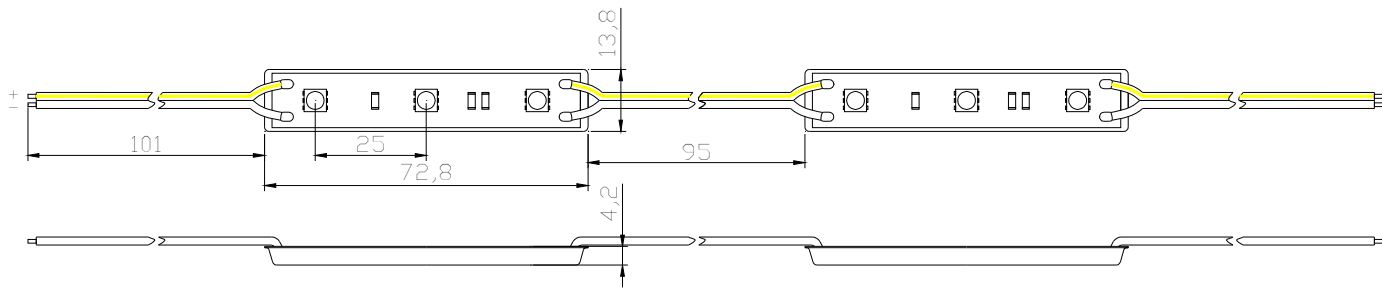
Features for one LED module:

- ◇ To adopt the 5050 SMD LED as the light source;
- ◇ Working Voltage : DC12 V
- ◇ LED Working Current : 51-57mA
- ◇ LED View Angle : 120DEG
- ◇ Grade of waterproof : IP66
- ◇ Packing : Carton

Applications :

- ◇ Add. boxes ;
- ◇ Lighting projects ;
- ◇ Family decorations ;
- ◇ Special lighting in other places ;

Product measurement and circuit diagram



单位 : mm ×

Absolute maximum parameter (Ta=25°C) for one LED module :

Item	Symble	Absolute Maximum parameter	Unit
Forward Current	IF	60	mA
Power	PD	0.72	W
Anti-static Voltage	ESD	800	V
Working temperature	Topr	-25~+45	°C
Storage temperature	Tstg	-40~+80	°C

Electrical / Optical characteristics(Ta=25°C)

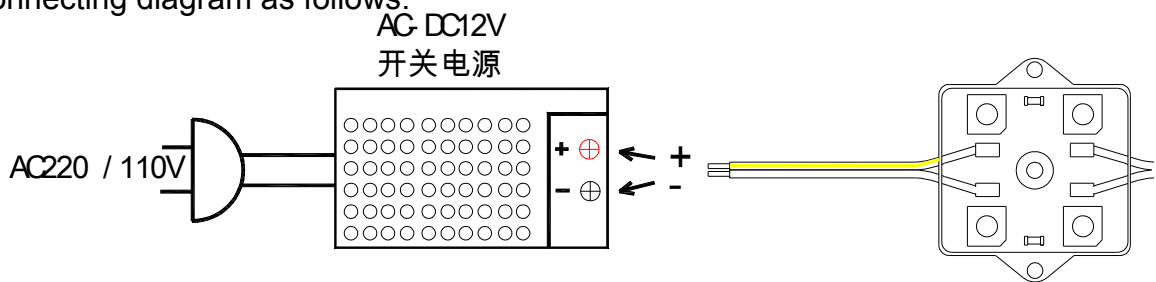
Part No.	Color	Max Power	Working current	Wave/color temperature	Chain Luminous Flux	Quantity In chain
25NEO-F12T73R3-E	R	18	1.5A	625-630nm	300Lm	25
25NEO-F12T73Y3-E	Y	18	1.5A	590-595nm	300Lm	
25NEO-F12T73B3-E	B	18	1.5A	465-470nm	300Lm	
25NEO-F12T73G3-E	G	18	1.5A	515-520nm	750Lm	
25NEO-F12T73W3-E	W	18	1.5A	5000-6000k	1125Lm	
25NEO-F12T73CW3-E	CW	18	1.5A	7000-9000k	1125Lm	
25NEO-F12T73WW3-E	WW	18	1.5A	2900-3200k	1125Lm	

Remark: 1. Flux measurements allow tolerance of $\pm 15\%$. 2.LED Flux, Wave length, color temperature parameter can be produced by customers specifying.

Instruction :

1、 Wires connecting methods :

3 PCS 5050 LED module (waterproof): 2 power wires are to be connected from the products. One is yellow color, the other is pure white color, the diameter is 22AWG, and the length is 110mm. The yellow wire should be connected at DC12v power positive pole, and the pure white wire should be connected at DC12v power negative pole. The wires connecting diagram as follows:



2 Installation methods :

To Put the double glue fabric on the base.

3.Installation remarks :

- 1) 、 correct connecting
- 2) 、 Do not extend the absolute maximum parameter when the products are working
- 3) 、 Note anti-static as the process of installing and working. Do not touch the light source and glue with the sharp things
- 4)、 Do not touch the chemicals, close fire
- 5) 、 The longest one-way to power a few lights to not more than 30 light source